



ADVANCED HANDS-ON IN PROTEOMICS

17th - 18th November 2026

COURSE OUTLINE

MODULE I - HANDS-ON

- Proteome extraction in liquid and solid biopsies
- Total protein quantification
- Filter Aided Sample Preparation (FASP) for proteomic sample preparation

REGISTRATION FEES

550 €

Registration fee includes course manual, protocols and coffee breaks.

MAXIMUM 10 PEOPLE

Registrations will be accepted
in order of receipt

LOCATION

Lab 014 at NOVA School of Science and Technology, 2829-516 Caparica, Portugal.
Departmental Building.

WEBPAGES

<https://www.bioscopegroup.org> & <https://youtu.be/tw1ndUXNobl>

TO REGISTER | FURTHER INFORMATION PLEASE CONTACT

Prof. José L. Capelo | jlcapelom@bioscopegroup.org

Inês Domingos | ines.domingos@bioscopegroup.org

OUR TEACHING STAFF

COURSE DIRECTOR



Hugo M. Santos, PhD
NOVA University of Lisbon
(Portugal)

COURSE MANAGER



Inês Domingos, MSc
NOVA University of Lisbon
(Portugal)

BIOSCOPE GROUP'S PROFESSORS



José L. Capelo, PhD
NOVA University of Lisbon
(Portugal)



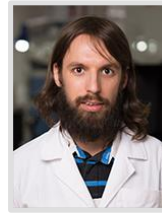
Carlos Lodeiro, PhD
NOVA University of Lisbon
(Portugal)



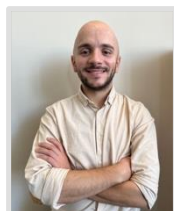
Elisabete Oliveira, PhD
NOVA University of Lisbon
(Portugal)



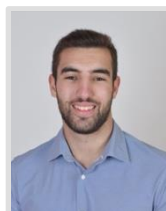
Javier F. Lodeiro, PhD
NOVA University of Lisbon
(Portugal)



Adrián F. Lodeiro, PhD
NOVA University of Lisbon
(Portugal)



André Figueiredo, MSc
NOVA University of Lisbon
(Portugal)



Gonçalo Pedro, MSc
NOVA University of Lisbon
(Portugal)

NOVA School of Science and Technology, FCT – NOVA Caparica Campus

Take a look at this → <https://www.youtube.com/watch?v=8DAZq40wmMo>



PRICES

SINGLE TICKET: **550 €**

GROUP DISCOUNT ON DEMAND: ines.domingos@bioscopegroup.org

APPLY NOW

For more information visit

<https://advancedproteomics.bioscopegroup.org>

Or e-mail Prof. José L. Capelo at jlcapelom@bioscopegroup.org

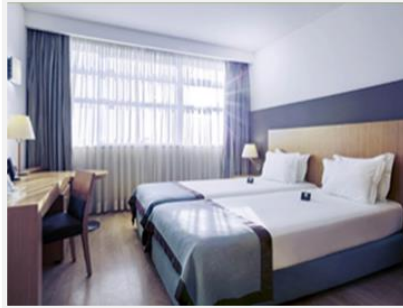
Or e-mail Inês Domingos at ines.domingos@bioscopegroup.org

Or via whatsapp (+351) 919 404 933 - Prof. Capelo



RECOMMENDED ACCOMODATION

MERCURE Almada (★ ★ ★ ★)

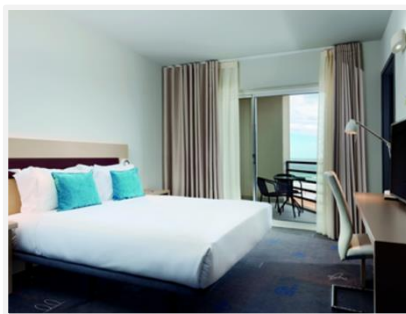


WHY THIS HOTEL?

This Hotel has direct connection with the University through the tram. The Tram station is 450 meters away from the Hotel and there you can purchase a ticket to take you to the University (line 3 of the Tram Station. Destination: University). The Tram Station near the Hotel is called 'Ramalha'. A single Tram ticket (one way) costs 0.85 € or 0.75 € (if you purchase 10 at a time).

<https://www.mercure.com/gb/hotel-A040-mercure-lisboa-almada-hotel/index.shtml>

TRYP Lisboa Caparica Mar Hotel (★ ★ ★ ★)



WHY THIS HOTEL?

This Hotel has an excellent location as it is just in front of the Caparica Beach. In order to go to the University you should pick a Taxi. One single journey costs approximately 5 to 8 €. You can call for a taxi in the reception of the hotel.

<https://www.tryplisboacaparica.com>

RECOMMENDED ACCOMODATION

WOT Costa da Caparica Hotel (★ ★)



WHY THIS HOTEL?

This WOT Hotel is located 500 meters from Caparica beach and an excellent breakfast. In order to go to the University you should pick a Taxi. One single journey costs approximately 5 to 8 €. You can call for a taxi in the reception of the hotel.

<https://www.wotels.com/wotcostadacaparica/>